

Styling parts that make your truck look great!

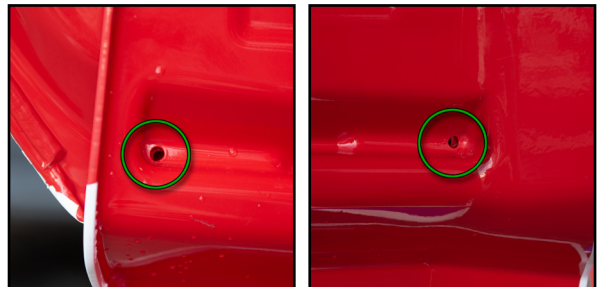
Mounting instructions Door extension

Contents

- 2x Door extensions Left and right side
- 1x Roll of double sided adhesive tape, 96cm long

At the bottom you'll find a QR link to a video of the procedure

1. Remove the two rubber seals on the lower inside of the cab door
2. Make sure that the surfaces on the door extension and the lower inside of the cab door are clean and dry
3. Apply 12 cm long pieces of tape according to the picture
4. Use the sight holes to find the correct position



Align them with the outer upper corners of the holes left from the rubber seals removed in step 1

5. Push the door extension against the door, angle outwards so that the tape do not touch the door

This edge should be the only part making contact with the inside of the door at this point



6. Move it upwards until the lower tape make contact



7. Angle the door extension so that the upper tape makes contact and press firmly for ~30 seconds.



An ultimate bond is achieved after 72 hours
After 3 hours it has 75% of it strength

Check that the door extension moves freely from the step on the drivers side when tilting the cab.

(When tilting the cab, the cab moves sideways. The distance between the door extension and the step will decrease)

If the product is attached correctly you should have a clearance of approximately 5mm.

If there's a problem. Redo the mounting procedure

[Link to video instructions on Youtube](#)

